

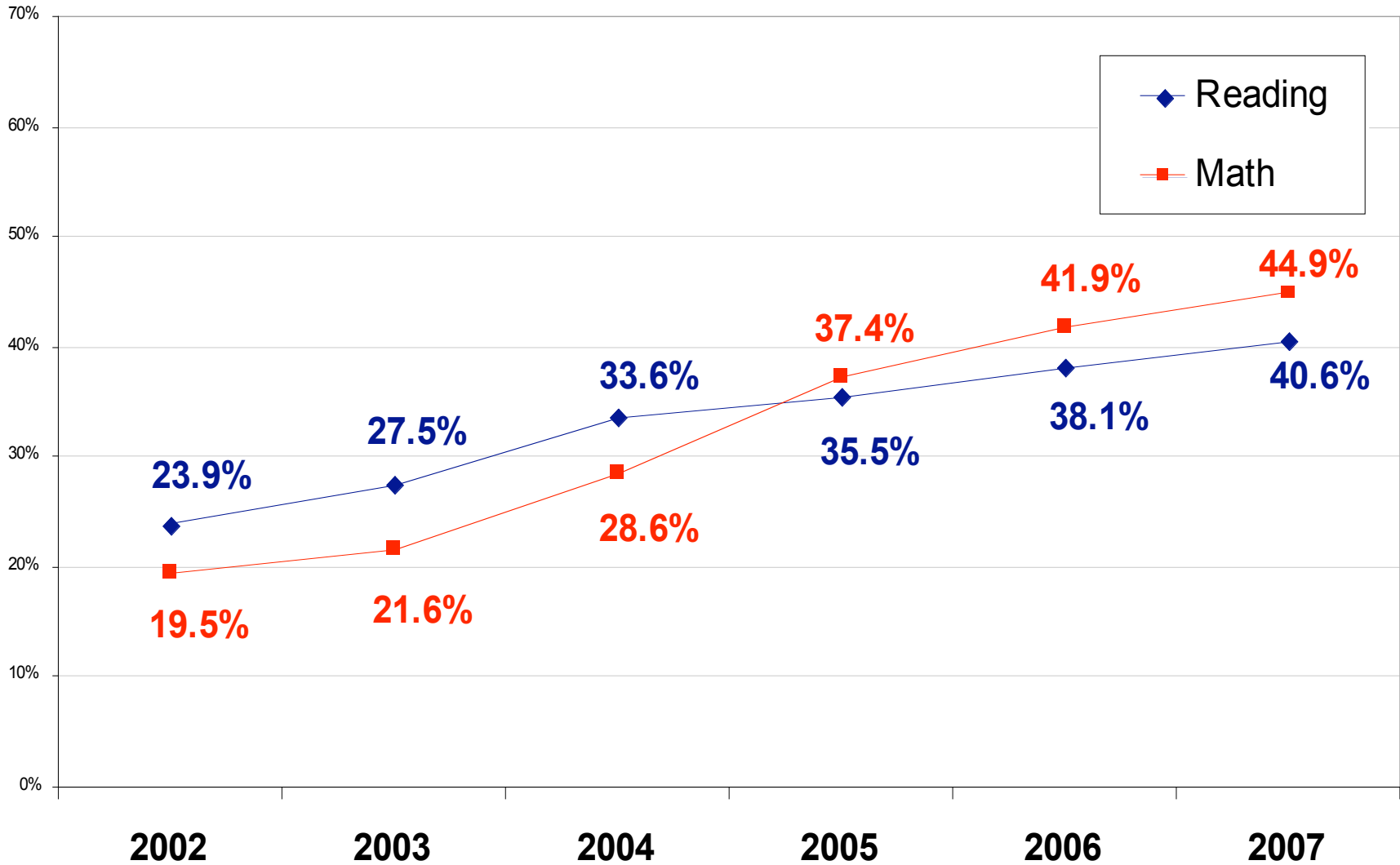
The School District of Philadelphia
2007 PSSA Results
August 7, 2007



Percentage of Students Advanced or Proficient All Grades Combined

Chart 1

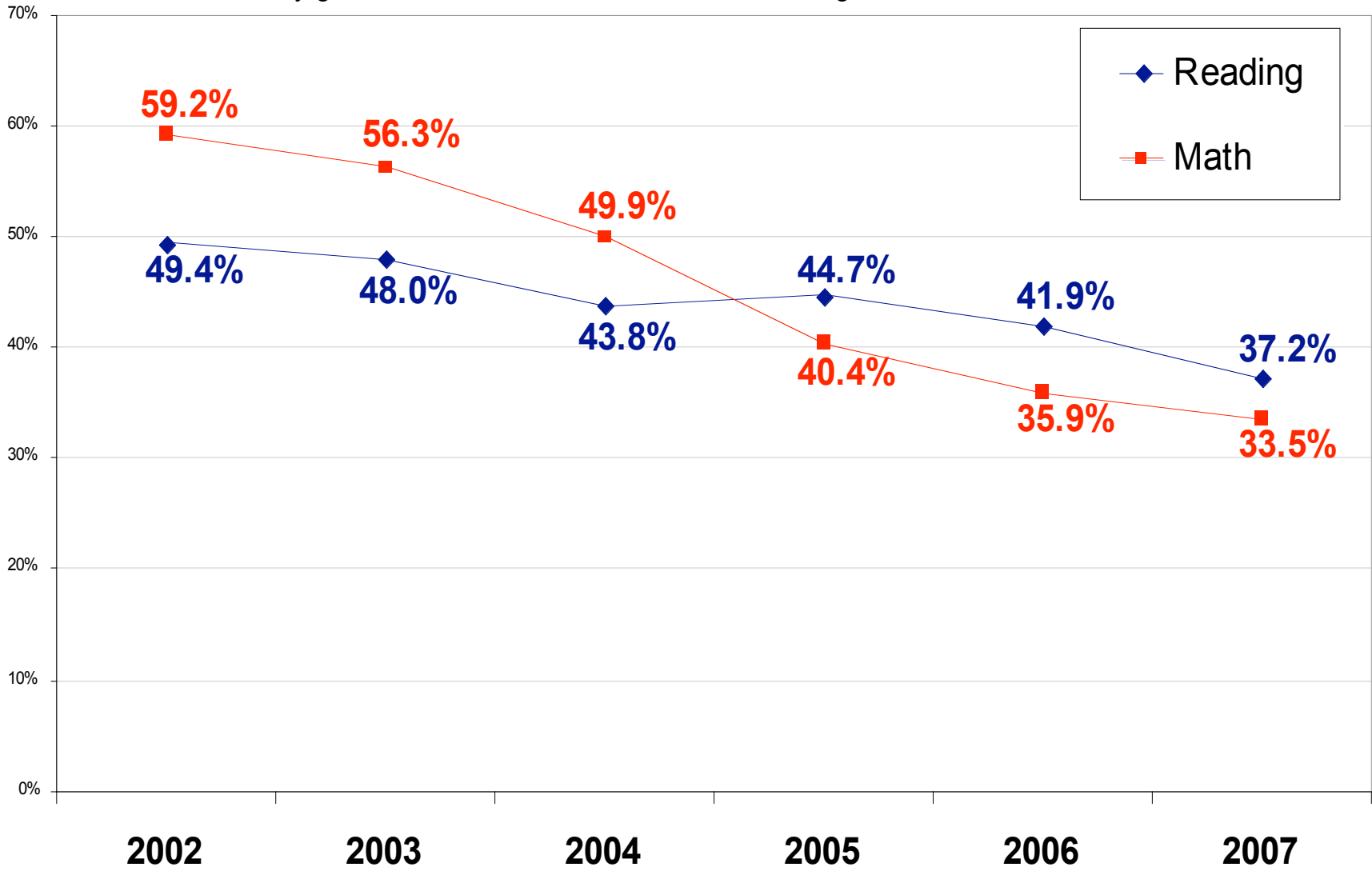
*Initially grades 5, 8 & 11. Grade 3 added in 2006; grades 4, 6, 7 added in 2007.



Percentage of Students Below Basic All Grades Combined

Chart 2

*Initially grades 5, 8 & 11. Grade 3 added in 2006; grades 4, 6, 7 added in 2007



PSSA Results by Grade

Chart 3

Percentage of Students Scoring Advanced or Proficient

READING

Grade	Year			Change	
	2002	2006	2007	06-07	02-07
3		42.0%	46.4%	4.4%	9.4%
4		36.1%	42.8%	6.7%	N/A
5	20.8%	31.6%	32.0%	0.4%	11.2%
6		35.6%	36.7%	1.1%	N/A
7		39.4%	40.7%	1.3%	N/A
8	24.1%	44.5%	49.2%	4.7%	25.1%
11	28.7%	33.1%	34.9%	1.8%	6.2%

PSSA Results by Grade

Chart 4

Percentage of Students Scoring Below Basic

READING

Grade	Year			Change	
	2002	2006	2007	06-07	02-07
3		38.0%	34.4%	-3.6%	-6.6%
4		38.6%	35.4%	-3.2%	N/A
5	52.0%	46.7%	45.4%	-1.3%	-6.6%
6		38.3%	37.4%	-0.9%	N/A
7		34.5%	35.0%	0.5%	N/A
8	49.0%	35.7%	29.8%	-5.9%	-19.2%
11	46.0%	47.2%	45.5%	-1.7%	-0.5%

PSSA Results by Grade

Chart 5

Percentage of Students Scoring Advanced or Proficient

MATH

Grade	Year			Change	
	2002	2006	2007	06-07	02-07
3		59.0%	52.2%	-6.8%	0.2%
4		51.3%	52.9%	1.6%	N/A
5	18.7%	41.6%	44.6%	3.0%	25.9%
6		40.6%	46.8%	6.2%	N/A
7		39.4%	40.1%	0.7%	N/A
8	17.9%	37.0%	43.9%	6.9%	26.0%
11	23.6%	26.9%	30.9%	4.0%	7.3%

PSSA Results by Grade

Chart 6

Percentage of Students Scoring Below Basic

MATH

Grade	Year			Change	
	2002	2006	2007	06-07	02-07
3		21.0%	19.6%	-1.4%	-5.4%
4		31.9%	31.1%	-0.8%	N/A
5	59.0%	31.9%	32.1%	0.2%	-26.9%
6		35.7%	30.7%	-5.0%	N/A
7		37.4%	39.1%	1.7%	N/A
8	61.0%	39.4%	35.1%	-4.3%	-25.9%
11	56.0%	59.2%	50.6%	-8.6%	-5.4%

Percentage of Students Advanced or Proficient by Group

All Grades Combined

READING

*Grades used for AYP purposes.

Some tested grades in 2005 and 2006 not included.

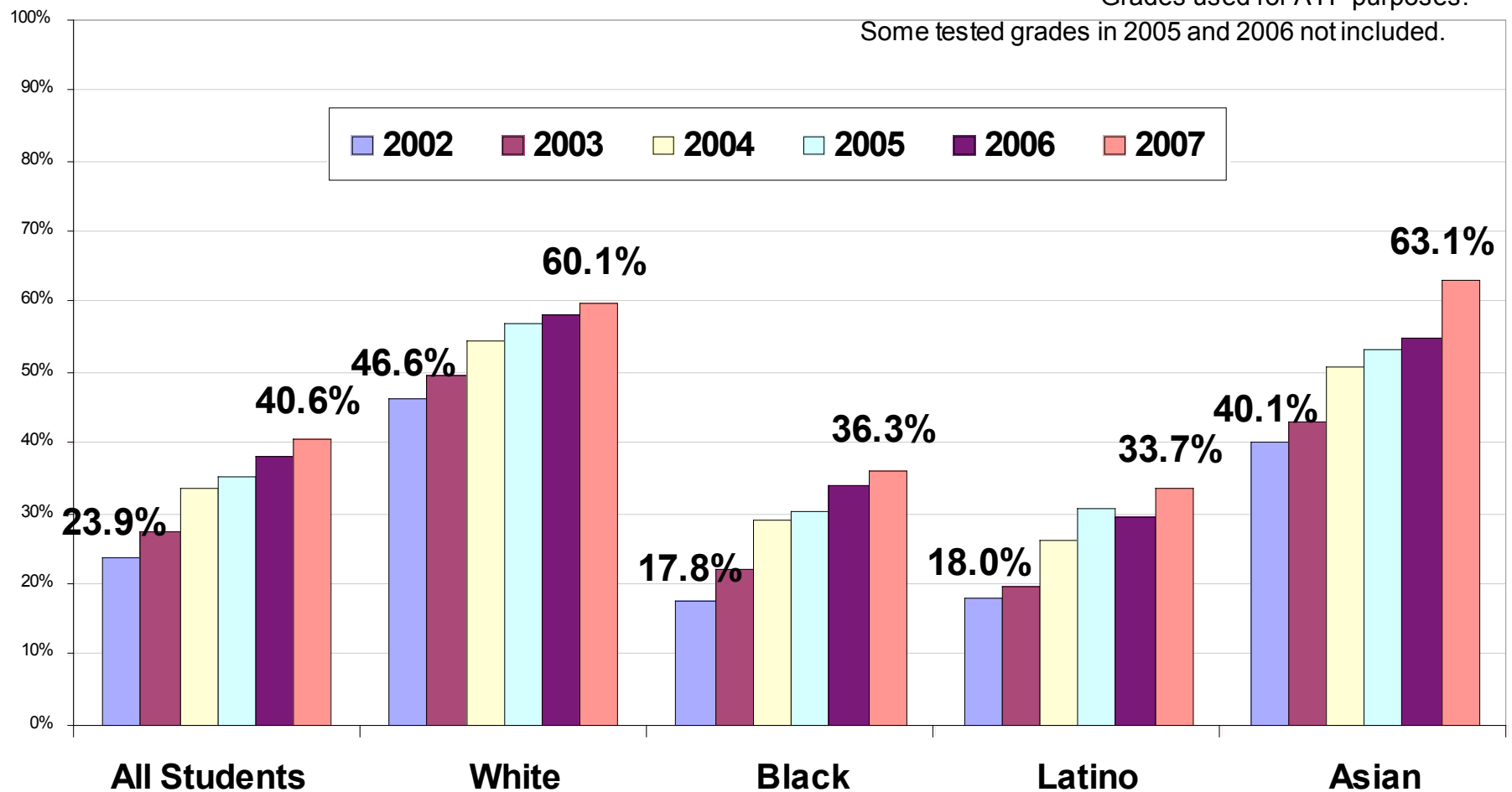


Chart 8

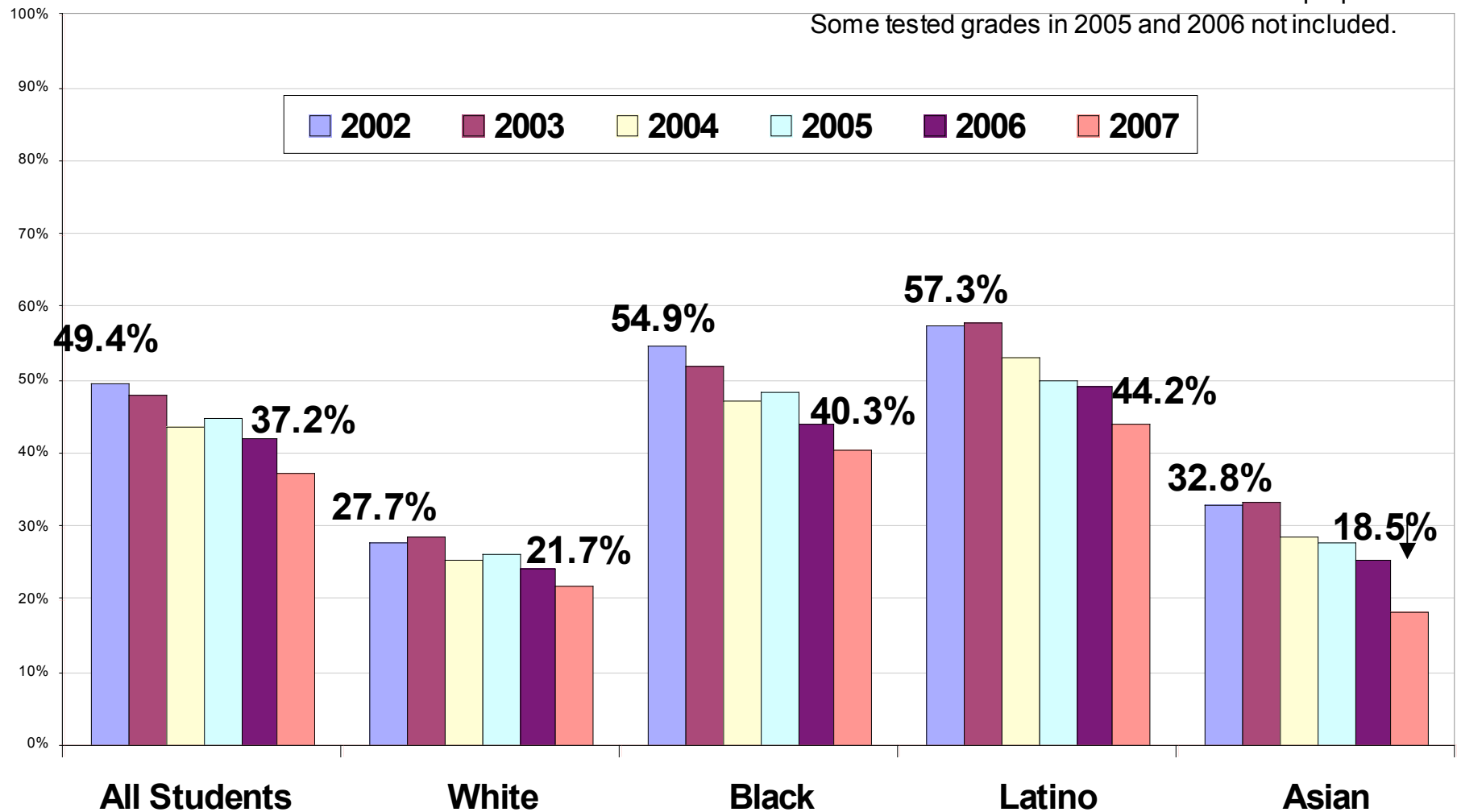
Percentage of Students Below Basic by Group

All Grades Combined

READING

*Grades used for AYP purposes.

Some tested grades in 2005 and 2006 not included.



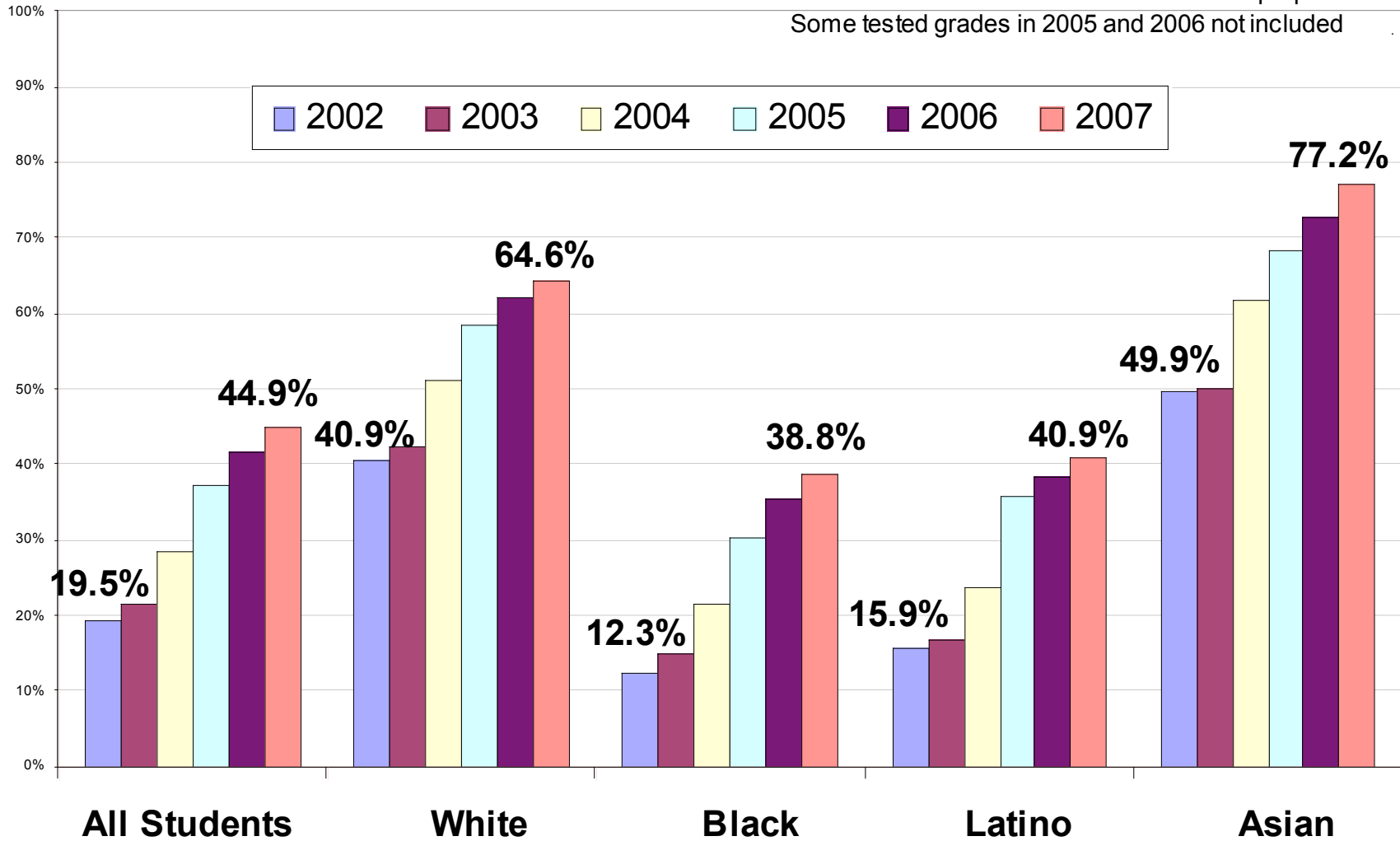
Percentage of Students Advanced or Proficient by Group

All Grades Combined

MATH

*Grades used for AYP purposes.

Some tested grades in 2005 and 2006 not included



Percentage of Students Below Basic by Group

All Grades Combined

MATH

*Grades used for AYP purposes.

Some tested grades in 2005 and 2006 not included.

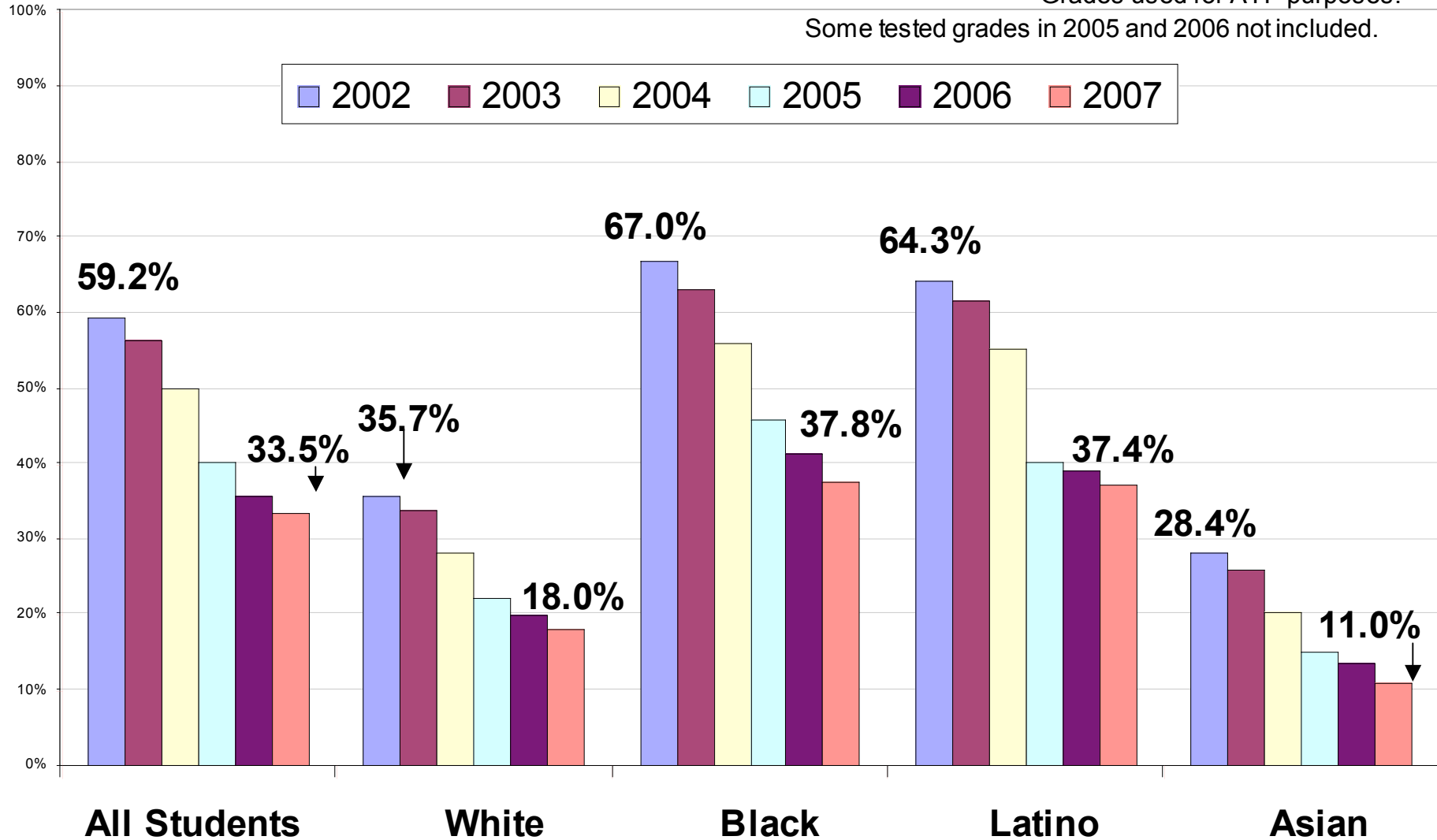
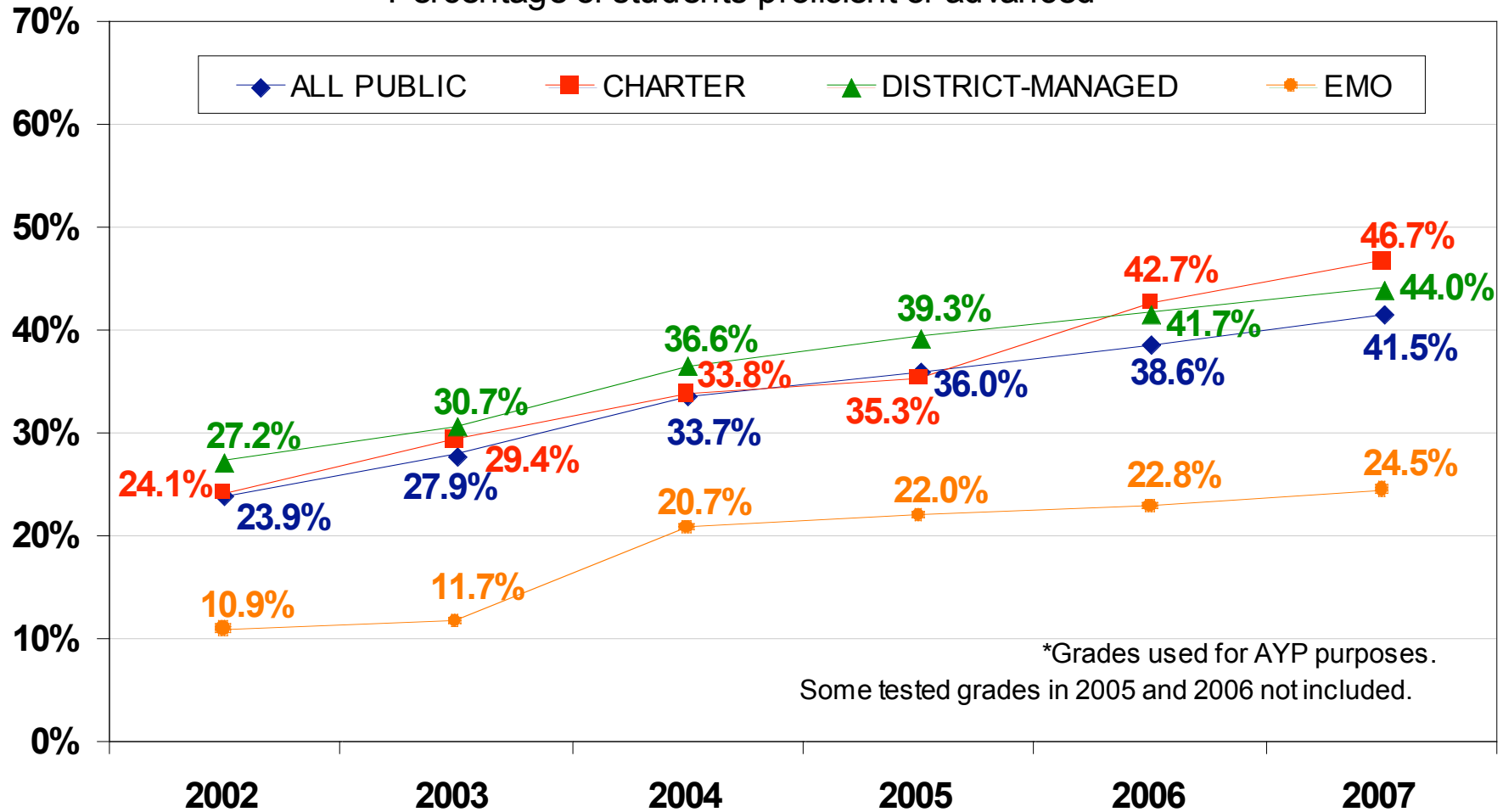


Chart 11

**Public School Students in Philadelphia
2002-2007 PSSA Results by Management Type
All Grades Combined
Reading**

Percentage of students proficient or advanced



**Public School Students in Philadelphia
2002-2007 PSSA Results by Management Type
All Grades Combined
Math**

Chart 12

Percentage of students proficient or advanced

